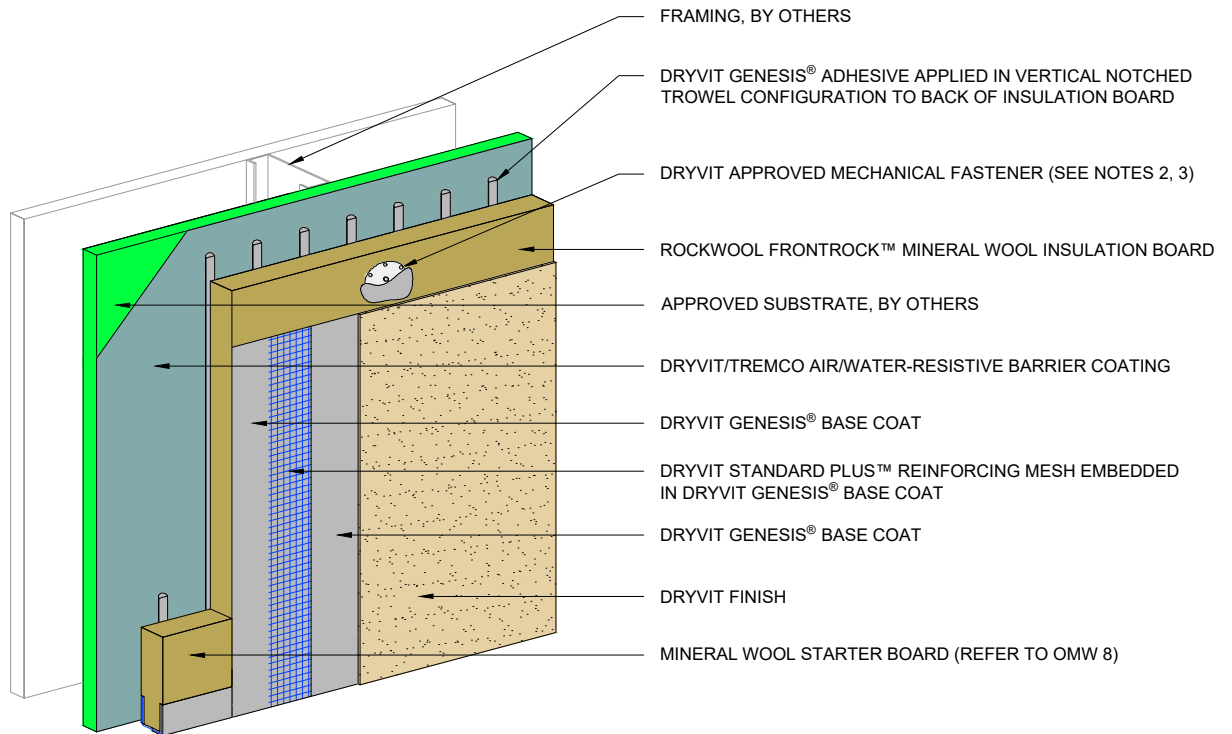
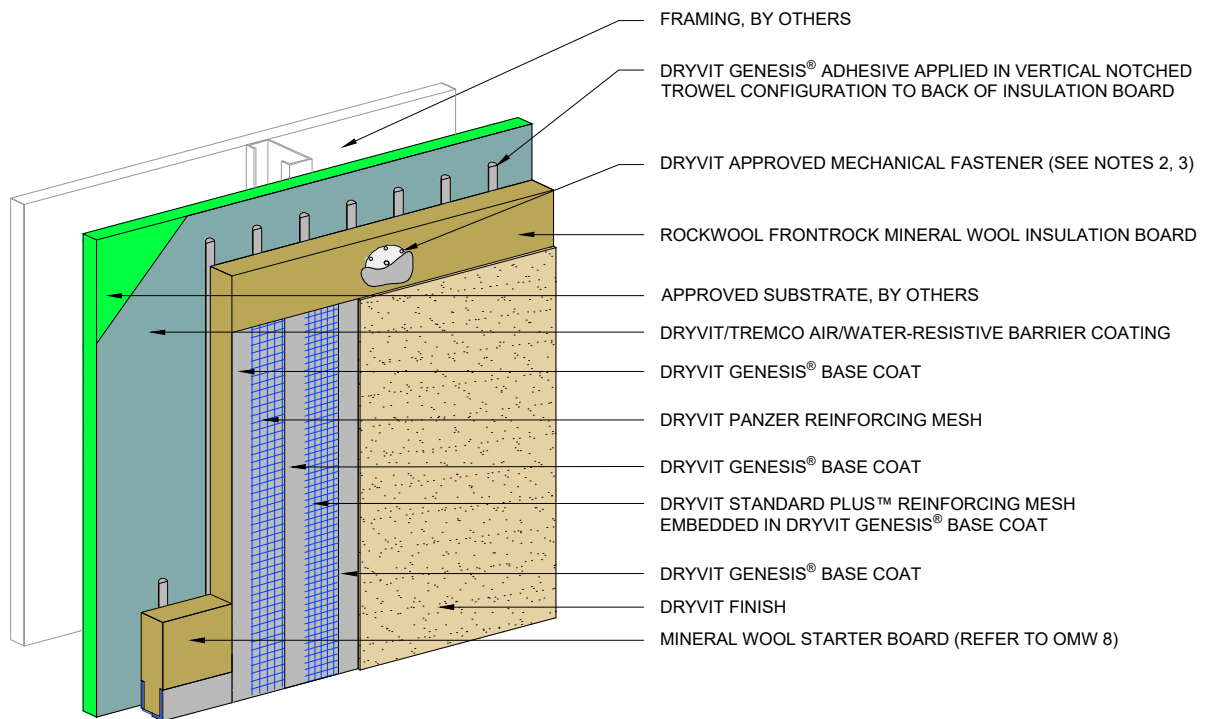


# STANDARD IMPACT RESISTANCE



# ULTRA HIGH IMPACT RESISTANCE



## NOTE:

1. DRYVIT RECOMMENDS THAT GROUND FLOOR APPLICATIONS AND ALL FACADES EXPOSED TO ABNORMAL STRESS, HIGH TRAFFIC, OR DELIBERATE IMPACT HAVE THE BASE COAT REINFORCED WITH PANZER® MESH PRIOR TO STANDARD PLUS™ MESH. LOCATION OF HIGH IMPACT ZONES SHOULD BE INDICATED ON CONTRACT DRAWINGS.
2. ALLOW ADHESIVE TO DRY IN ADVANCE OF INSTALLING FASTENERS. SPOT FASTENER/WASHER WITH DRYVIT GENESIS® BASE COAT. SUPPORT MINERAL WOOL INSULATION BOARD, AS REQUIRED, WHILE ADHESIVE DRIES.
3. REFER TO OMW 6, OMW 6a, AND OMW 7 FOR MECHANICAL FASTENER TYPE, LAYOUT, DIMENSION, AND WIND LOAD LIMITS.

*This detail is for general informational purposes only. The project design professional determines, in its sole discretion, whether this detail or a functionally equivalent detail is best suited for the project with respect to any architecture, engineering, and design requirements, including any local building code requirements. If this document is not reviewed and the product is not approved for use by a licensed design professional, the customer agrees that the detail may contain substantive flaws requiring correction, and hereby releases Tremco CPG Inc. from any and all liability related to the design and installation of the product. This detail is subject to change without notice. Contact Tremco to ensure you have the most recent version.*

## Outsulation® Mineral Wool System



Dryvit Technical Support: 800-556-7752

Detail: Outsulation Mineral Wool System Cutaway

Drawn by: HDE

Checked by: CW

Scale: NTS

Date: 2/28/2024

File Name:

OMW 1



Construction Products Group

www.tremcocpg.com